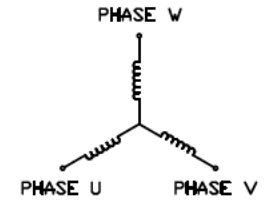
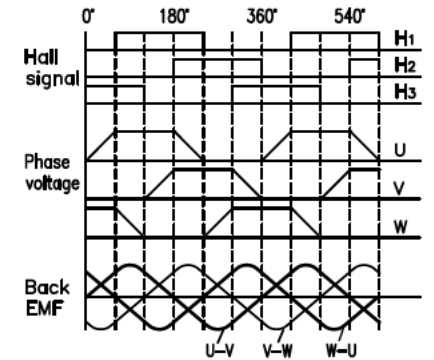


### THREE-PHASE CONNECTING



CW from shaft side  
从出轴端看为CW

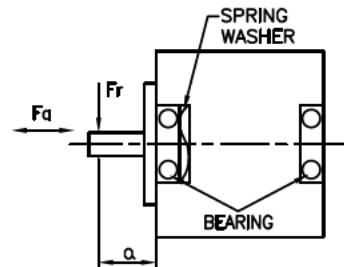


- CN1 JST B5P-VH:  
PIN1 - GND  
PIN2 - Phase U  
PIN3 - Phase V  
PIN4 - Phase W  
PIN5 - GND
- CN2 JST B6B-PH-K-S:  
PIN1-GND  
PIN2-+5V DC(4.5-18V DC)  
PIN3-Hall 1  
PIN4-Hall 2  
PIN5-Hall 3  
PIN6-GND

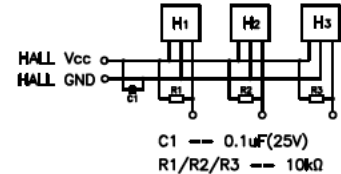
### OUTRUNNER BLDCM

NUMBER OF PHASE 绕组相数	3
NUMBER OF POLES 极数	16
LINE TO LINE RESISTANCE 线电阻	1.42±10% ohms@20°C
LINE TO LINE INDUCTANCE 线电感	0.59±20% mH@1kHz
NOMINAL VOLTAGE 额定电压	24 VDC
NO LOAD SPEED 空载转速	6500 RPM
NO LOAD CURRENT 空载电流	<0.3 A
RATED TORQUE 额定转矩	50 mN.m
RATED SPEED 额定转速	5000 RPM
RATED CURRENT 额定电流	1.58 A
PEAK TORQUE 峰值转矩	150 mN.m
PEAK CURRENT 峰值电流	4.3 A
BACK EMF CONSTANT 反电势常数	2.61 Vrms/kRPM

### PERMISSIBLE RADIAL+AXIAL FORCE



### HALL CONNECTION



TORQUE CONSTANT 转矩常数	35.2 mN.m/A	AXIAL-FORCE 轴向压力	Fa=10 N Max.
INSULATION CLASS 绝缘等级	B 130°C	DISTANCE 距离	a=10 mm
DIELECTRIC STRENGTH 介电强度	600VAC 1s,2mA	RADIAL-FORCE 径向压力	Fr=20 N Max.
INSULATION RESISTANCE 绝缘电阻	100MΩhm @500VDC	SHAFT RADIAL PLAY 径向间隙	0.02mm Max. @4N
ROTOR INERTIA 转子转动惯量	99 g.cm <sup>2</sup>	SHAFT AXIAL PLAY 轴向间隙	0.14mm Max. @4N
WEIGHT 重量	80 g		
OPERATION AMBIENT 使用环境	Ambient temperature:-20...+50°C,humidity Max. 85%(No condensation)		
STORAGE AMBIENT 存储环境	Ambient temperature:-10...+35°C,humidity Max. 85%(No condensation)		

REV	ECN NO.	DESCRIPTION	DRN	APP'D	DATE	DESIGN	DATE	P/N.	3.102.045.xxxx
UNLESS OTHERWISE SPECIFIED TOLERANCES						MATERIAL	CONTR.	CHECK	TITLE
DECIMALS: .x ±0.5									Specifications
ANGULAR: .xx ±0.25									USED ON
.xxx ±0.1									FL45BLW18-24V-7130A
UNIT: mm						FIRST ANGLE PROJECTION	SCALE N.T.S	DWG NO.	REV
DO NOT SCALE DRAWING									A
SHEET 1 OF 1									